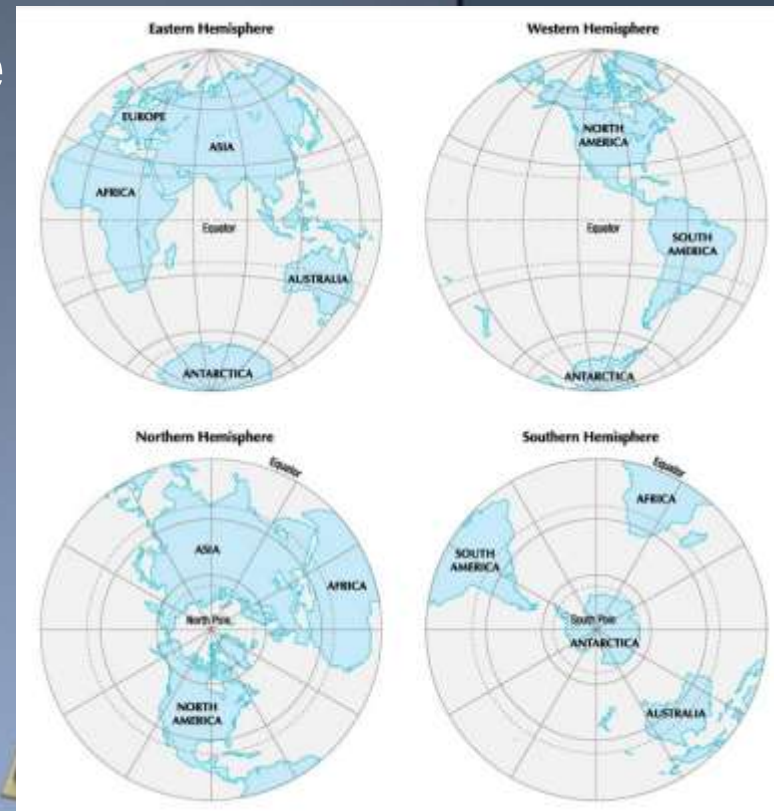


5 themes of Geography

- Location:

- Absolute: precise/exact:

- Street address, latitude/longitude
- Hemisphere: Hemi (half) sphere (circle)—Half circle
- Latitude (parallels)---
flatitude/ladder
 - Equator (0 degrees)
 - Tropic of Cancer 23.5 degrees NORTH
 - Tropic of Capricorn 23.5 degrees SOUTH



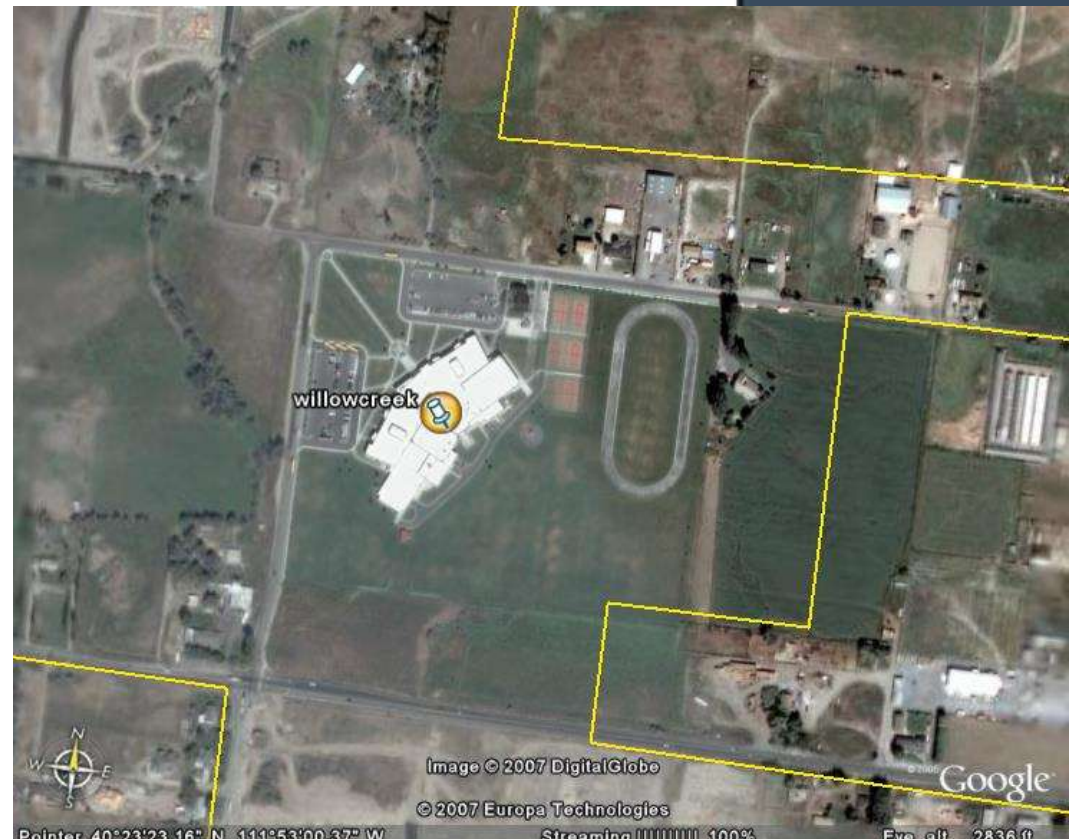
Location cont.

Longitude (meridians)

Prime Meridian –
Greenwich, England
(0 degrees)

Relative Location:--

Where a place is in
relation to another
place.



Place: What is it like there?

- --physical features—(land, water, weather, soil, and plant and animal life)
 - Examples: Utah lake, Jordan river, Ocre mountains, desert
- --cultural (human) features (people's activities, religions, languages, and cultural backgrounds)
 - Examples: neighborhoods, lehi roller mills, cabelas, legacy center, Christian, English, Caucasion



Human/Environmental Interaction: covers the ways people and environments interrelate with and affect each other.

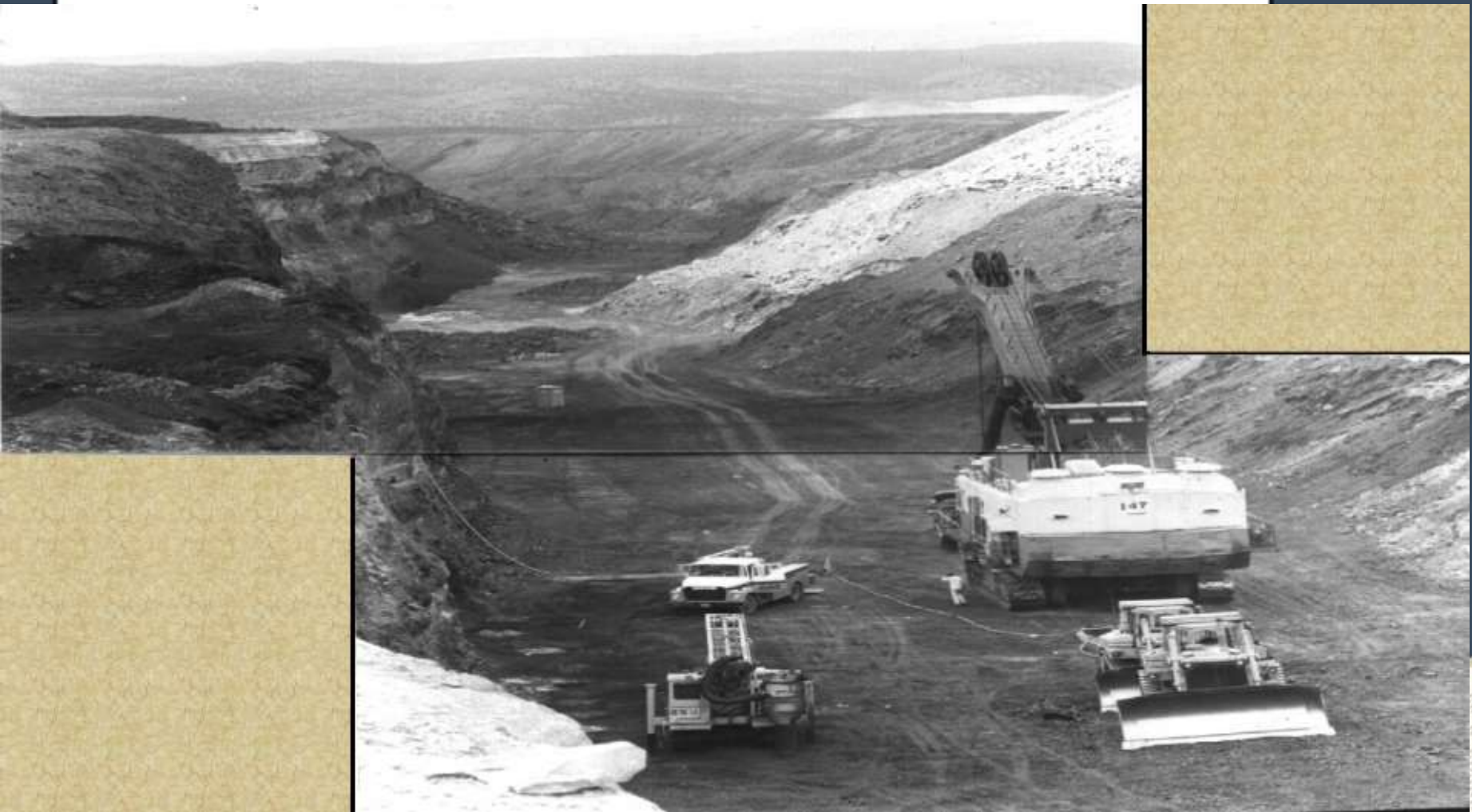
- How the land is used? (DEPEND)
 - Water, food, shelter
- How the land or area is modified? How have we changed the land? (CHANGE)
 - Houses, schools, pioneer crossing, less and less farmland
- How have people adapted? (ADAPT)
 - lighter clothes in the summer/ Heavier clothes in winter.
 - road construction











Movement

- GOODS, IDEAS, PEOPLE





...the world's first high-speed rail line, the TGV, was introduced in 1975. Since then, the number of high-speed rail lines has grown rapidly, and the total length of high-speed rail tracks has increased significantly. Today, high-speed rail is a major mode of transportation in many countries, and it is expected to continue to grow in the future.

Region

- Areas that share similar characteristics.
 - Rocky Mountain Region



Different types of Regions

- Formal Region- has one or more common features that make it different from surrounding areas.
- Functional Region- are made up of different places that are linked together and function as a unit.
 - Example a city transit system
- Perceptual regions- reflect humans feelings and attitudes.
 - example. “home”





THE END

Template Provided By



**500,000 Downloadable PowerPoint Templates,
Animated Clip Art, Backgrounds and Videos**